



COLLECTION
CALVIN

58X58 CM / 22,8"X22,8"



EL MOLINO - Hijos de Cipriano Castelló, S. L. - C/ Manuel Escobedo, 15 - 12200 Onda (Castellón, Spain)

T. (+34) 964 77 60 20 - F (+34) 964 60 01 48 - elmolino@elmolino.es - www.elmolino.es

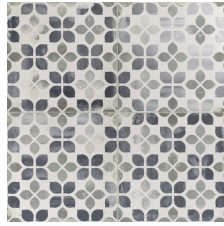
CALVIN



58x58 / 22,8"x22,8"



CALVIN BEIGE 58X58 - 22,8"X22,8"



CALVIN AZUL 58X58 - 22,8"X22,8"

TECHNICAL FEATURES

PORCELAIN TILE

WALL TILE

FLOOR TILE

PORCELAIN

MATT

RECTIFIED

FROST RESISTANCE

DIGITAL PRINT

DESTONIFIED V2

PACKING LIST

| | Pieces | | kg | | Boxes | | m2 | | kg | |
|-------|--------|---|-------|-----------|-----------|-----------|-----------|-----------|-----------|-----|
| | 3 | 1 | 21,63 | Pallet | | Pallet | | Pallet | | |
| | | | | Europalet | Europalet | Europalet | Europalet | Europalet | Europalet | |
| 58X58 | | | | 40 | 40 | 40 | 40 | 40 | 875 | 875 |

* Indicated weights are approximated

The colors reproduced in this catalogue are purely illustrative and can differ from the original piece. The company declines any responsibility.

Price codes and product codes should be checked, since there may be typographical errors. We always recommend consulting the website or the commercial as the products could undergo price code, format or packing changes.

TECHNICAL FEATURES / CARACTERÍSTICAS TÉCNICAS

PORCELAIN TILES / PORCELÁNICO

Grupo Bla –GL (ANEXO G)

| | Test standard Norma de ensayo | Units Unidades | Product standard Requisito | Average values Valores promedio |
|---|----------------------------------|-------------------|-------------------------------|------------------------------------|
| DIMENSIONS AND SUPERFICIAL ASPECT / DIMENSIONES Y ASPECTO SUPERFICIAL | | | | |
| | UNE-EN-ISO-10545 | | UNE-EN-14411 | |
| Length and width / Longitud y anchura | Parte 2 | % | ± 0,6 | Cumple |
| Thickness / Espesor | Parte 2 | % | ± 5 | Cumple |
| Straightness of sides / Rectitud de lados | Parte 2 | % | ± 0,5 | Cumple |
| Rectangularity / Ortogonalidad | Parte 2 | % | ± 0,5 | Cumple |
| Surface planarity / Planitud de superficie | Parte 2 | | | |
| Central curvature / Curvatura central | | % | ± 0,5 | Cumple |
| Lateral curvature / Curvatura lateral | | % | ± 0,5 | Cumple |
| Warping / Alabeo | | % | ± 0,5 | Cumple |
| Surface quality / Aspecto superficial | Parte 2 | % | Min 95 | Cumple |
| PHYSICAL PROPERTIES / PROPIEDADES FÍSICAS | | | | |
| Water absorption / Absorción de agua | Parte 3 | % | E ≤ 0,5 | Cumple |
| Breakage strenght / Carga de rotura | Parte 4 | N | ≥ 1300 | Cumple |
| Bending strenght / Resistencia a la flexión | Parte 4 | N/mm ² | ≥ 35 | Cumple |
| Impact resistance / Resistencia al impacto | Parte 5 | | No exigida | - |
| Abrasion resistance / Resistencia a la abrasión | | | | |
| Deep abrasion / Abrasión profunda (UGL: No esmaltadas) | Parte 6 | mm ² | No aplica | - |
| Surface abrasion / Abrasión superficial (GL: Esmaltadas) | Parte 7 | PEI | Exigida | Según modelo |
| Thermal expansion coeficient / Coeficiente de dilatación térmica lineal | Parte 8 | °C ⁻¹ | No exigida | - |
| Resistance to thermal shock / Resistencia al choque térmico | Parte 9 | | No exigida | - |
| Resistance to cracking / Resistencia al cuarteo (GL: Esmaltadas) | Parte 11 | | Exigida | Resiste |
| Frost resistance / Resistencia a la helada | Parte 12 | | Exigida | Cumple |
| Friction coeficient / Deslizamiento | | | | |
| Coefficient of friction / Coeficiente de fricción (Tortus) | Parte 17 | | No aplica | - |
| Pendulum / Péndulo | ENV 12.633 | | No aplica | - |
| Ramp (boots) / Rampa (botas) | DIN 51.130 | | No aplica | - |
| Ramp (barefoot) / Rampa (pies descalzos) | DIN 51.097 | | No aplica | - |
| CHEMICAL PROPERTIES / PROPIEDADES QUÍMICAS | | | | |
| Resistance to staining / Resistencia a las manchas | Parte 14 | | ≥ 3 | 5 |
| Resistance to chemical attack / Resistencia a productos químicos | Parte 13 | | | |
| Resistance to low concentration acids / Resistencia a ácidos de baja concentración | | | No exigida | GLA |
| Resistance to low concentration alkalis / Resistencia a álcalis de baja concentración | | | No exigida | GLA |
| Resistance to high concentration acids / Resistencia a ácidos de alta concentración | | | No exigida | GHA |
| Resistance to high concentration alkalis / Resistencia a álcalis de alta concentración | | | No exigida | GHA |
| Resistance to domestic products and salts for swimming pools / Resistencia a productos domésticos y sales para piscinas | | | ≥ GB | GA |
| Emission of lead and cadmium / Emisión de plomo y cadmio | Parte 15 | | No exigida | - |
| SECURITY / SEGURIDAD | | | | |
| Euroclass. Fire resistance / Euroclase. Resistencia al fuego | Decisión 96/603/CE Modificada | | - | A1-A1fl |